

# MODULAR MAIN DISTRIBUTION BOARD 630A WITH SPINE

## Modular Main Distribution Board 630A - Temporary Power Solution for Construction Sites and Events

The Modular Main Distribution Board 630A is a temporary power distribution unit designed for construction projects and events. Developed with close attention to user feedback and practical site needs, this board offers a smart and versatile solution. It includes a **dedicated slot and current transformers (CTs) for a kWh meter**, intended for use with an **official consumption meter provided by the local utility company**.

### Modular Incoming Section

The incoming side features a modular busbar system and fuse switches, allowing flexible customization of cable sizes and quantities to meet the requirements of local power utility companies. Thanks to the open-frame design, connecting supply cables is easy – there's no need to thread cables underneath the board. Instead, the bottom panels can be removed during installation for convenient access.

### Modular Outgoing Section

The standard setup includes fuse switch outputs and a 63A socket module equipped with two 63A sockets. The modular design allows the addition of extra fuse switches or socket modules, enabling the inclusion of additional 230V, 16A, 32A, and 63A outputs based on the customer's needs. The standard configuration includes two free module slots for future expansion.

### Installer-Friendly Design

To support effortless installation, several thoughtful details have been incorporated:



- Easy cable connection via the open frame – no need to route cables under the board. Bottom panels are removable during installation.
- Phase fuses are color-coded for clarity and safety: brown (L1), black (L2), and grey (L3)
- The board is designed to allow a 63A cable to bend smoothly through brush strips under the door.

### Durable and Practical Construction

The board is made of powder-coated aluminum, offering durability while remaining lightweight. Forklift pockets and lifting lugs ensure easy handling, while lockable doors on both sides (triangular key) provide secure access. It stands on a robust welded aluminum base for enhanced stability and long-term reliability.

### Integrated Spine Monitoring System

All boards come equipped with the [Spine remote monitoring system](#) by default, which can be activated as needed. Spine enables real-time monitoring of energy consumption and CO<sub>2</sub> emissions. It also provides **predictive alerts**, such as warnings for phase imbalance, over- and undervoltage, and other fault conditions – helping prevent electrical issues before they cause downtime.

### Efficient Manufacturing & Logistics

All boards are manufactured in-house, ensuring high quality and fast spare part availability. The boards are logistically efficient, designed to fit a standard FIN-pallet (80×120 cm), simplifying storage and transport. The product is manufactured in compliance with **EN 61439-4** standards.

SKU: 505011015

## TECHNICAL ATTRIBUTES

**Nominal Current**

630A

**RCD**

2 x 300 mA

<b>Nominal voltage</b>	400V	<b>Short-circuit resistance</b>	I <sub>cf</sub> = 50 kA
<b>Input fuses</b>	2 x NH2 400A, 1 x NH3 630A	<b>Weight</b>	254,5 kg
<b>Size of the input cable</b>	3 x 95-240mm <sup>2</sup>	<b>Dimensions (H x W x D)</b>	1,83 x 1,2 x 0,8 m
<b>Fuse output</b>	3 x SLK 160 2 x SLK 400	<b>Enclosure class</b>	IP44
<b>Socket outlets</b>	2 x 63A	<b>Vastaava mallinumero</b>	ZFSF630/32/0002-02 FI

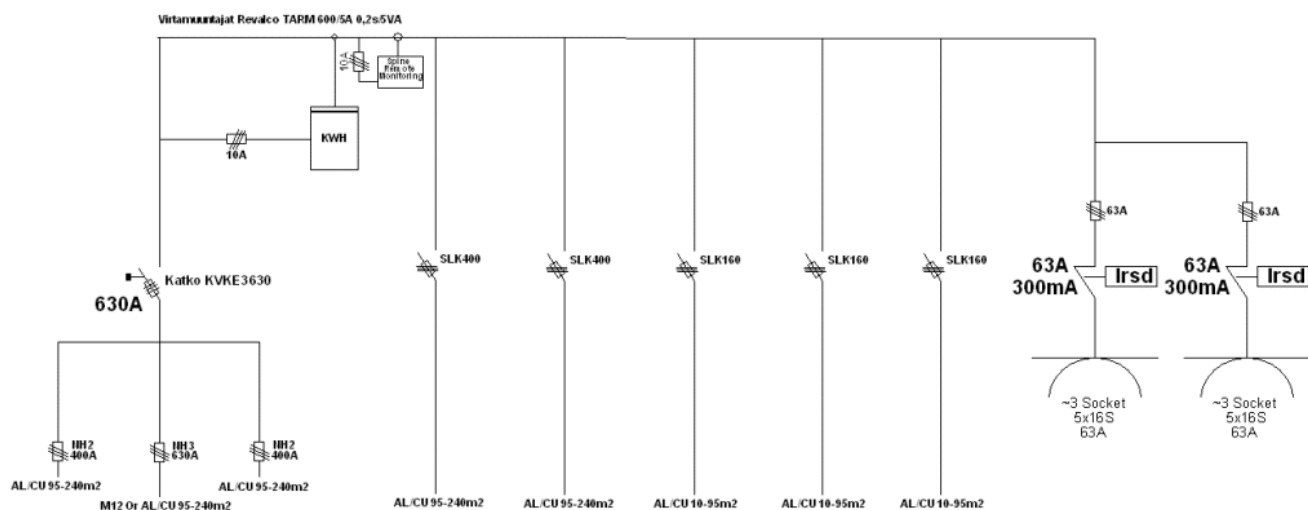
## ADDITIONAL PRODUCT DESCRIPTION

### Modular Main Distribution Board 630A - Features:

- **Modular Incoming Section:** Busbar system and fuse switches, customizable cable sizes and quantities
- **Modular Outgoing Section:** SLK fuse switches and 63A socket module
- **Durable Construction:** Powder-coated aluminum frame, forklift pockets, lifting lugs
- **Spine System:** Remote monitoring, energy and CO<sub>2</sub> consumption tracking, predictive alerts
- **Logistically Efficient:** Sized to fit a FIN-pallet
- **Standards Compliance:** Manufactured according to EN 61439-4 standard

# DIAGRAM IMAGES

## MSCS-630A



## OTHER PRODUCT IMAGES



