

## SUB CENTRAL FUC125X SPINE FOR SITE CABINS

The FUC125X Spine worksite electrical substation is specifically designed for powering and electrifying site offices and modular worksite cabins. This robust unit is equipped with 6 x 32A socket outlets, ideal for construction site cabins, along with 3 x 230V/16A industrial outlets to meet various site needs. The sub central features a large lockable door, securing the fixed cable supply and socket outlets from unauthorized access, ensuring a safe and reliable power source on the job site.

For ease of transportation and storage, the galvanized legs can be pushed inside the unit during transport and can be fully removed if necessary. The center also includes lifting loops and handles to assist with movement, while the frame is made from durable, powder-coated aluminum. The unit can be safely packed with 4 units per EUR pallet for efficient logistics.

The FUC125X comes standard with real-time remote monitoring via the [Spine service](#). This feature allows you to easily monitor and report the energy consumption of the site cabins, as well as set proactive alerts for potential issues. Activation of the Spine service is quick and simple with a QR code, making it a seamless solution for managing power usage on construction sites.

Manufactured in Finland, the FUC125X Spine is a high-quality, reliable solution for the electrification of site offices and worksite cabins.

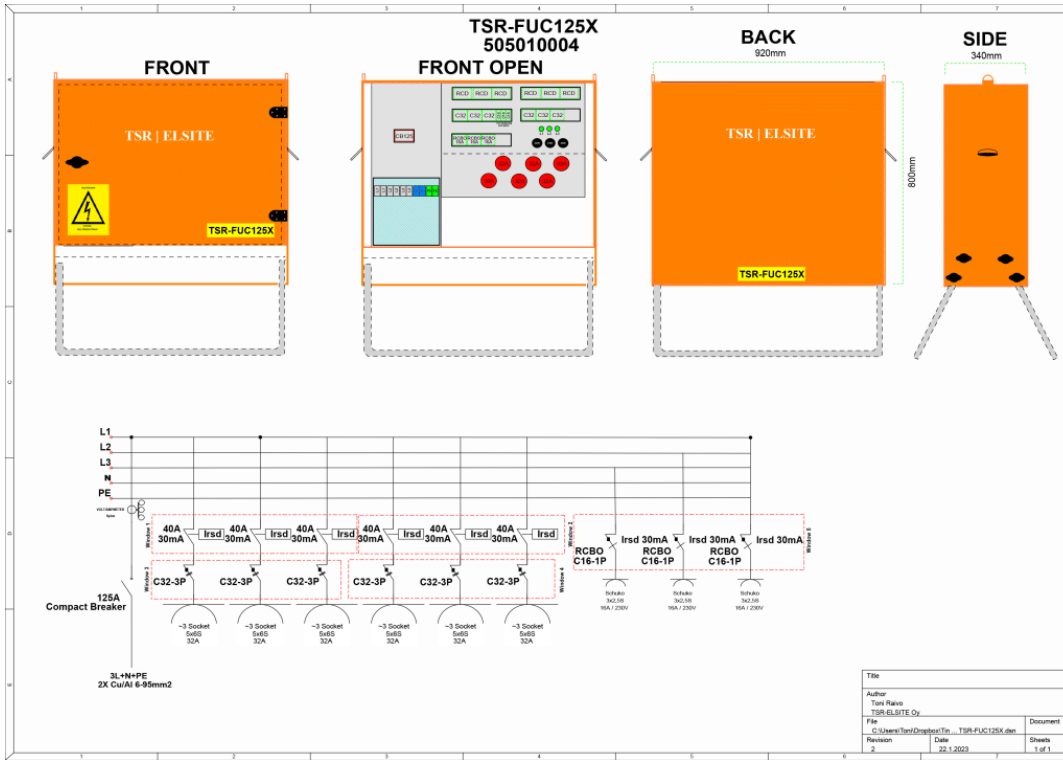
SKU: 505010004



## TECHNICAL ATTRIBUTES

|                        |                   |                                 |                       |
|------------------------|-------------------|---------------------------------|-----------------------|
| <b>Nominal Current</b> | 125A              | <b>RCD</b>                      | 300mA                 |
| <b>Nominal voltage</b> | 400A              | <b>Short-circuit resistance</b> | I <sub>cf</sub> =17kA |
| <b>Socket outlets</b>  | 6x32A, 3x230V/16A | <b>Enclosure class</b>          | IP44                  |

# DIAGRAM IMAGES



## OTHER PRODUCT IMAGES



