

SUB CENTRAL WITH FIXED INCOMING FUC125 SPINE

Sub central with fixed incoming cable for temporary electrification at construction sites and events in manufactured in Finland. The sub central FUC125 with Spine has a large lockable door, behind which fixed cable supply and socket outlets are secured from unauthorized access. Its high legs and lockable door make it particularly suitable for construction sites and events where the center may be placed on rough ground, and unauthorized persons may pass nearby.

The center features 2 x 63A, 2 x 32A, and 1 x 16A RCD-protected socket outlets, along with 3 x 230V/16A outlets. Each phase is equipped with VM phase meters, indicated by green lights, which measure the current and voltage passing through each phase, helping prevent unbalanced loads.

The galvanized legs of the sub central can be conveniently pushed inside the unit during transport, saving space, and can be completely removed if necessary. The center is also equipped with galvanized lifting loops and handles to ease transportation. The frame is made from powder-coated aluminum, and the units can be safely packed 4 per EUR pallet.

Standard features include [Spine](#) real-time remote monitoring, enabling energy consumption measurement and proactive alerts. The Spine service is easy and quick to activate using a QR code.

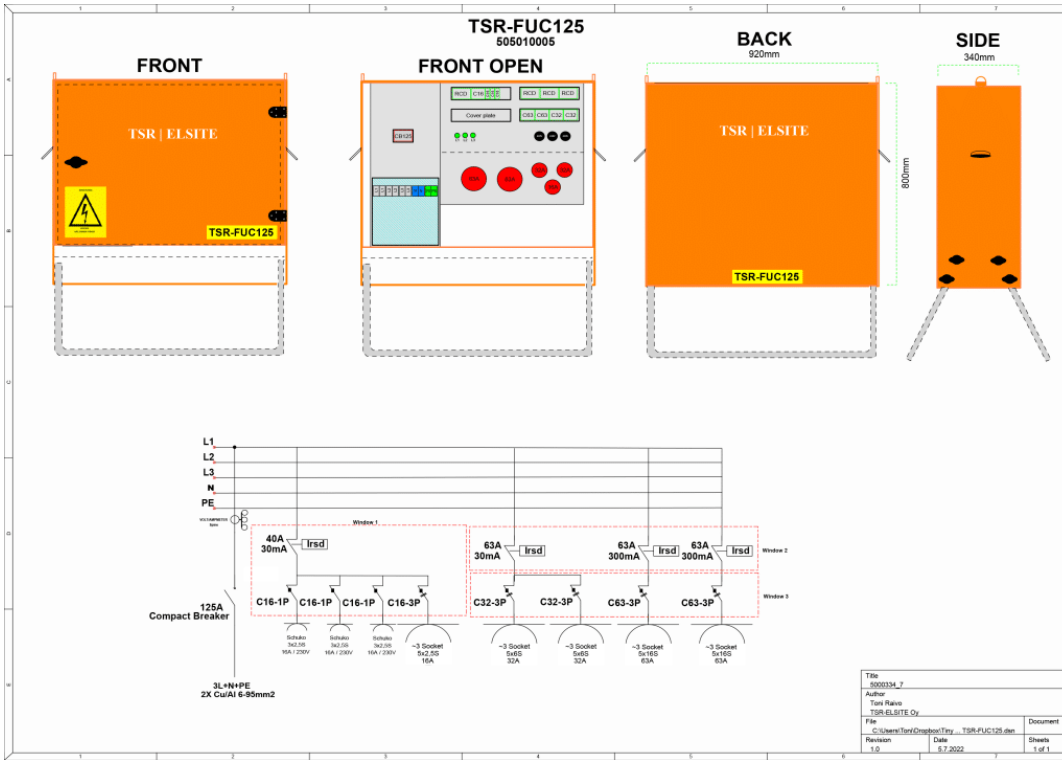
SKU: 505010005



TECHNICAL ATTRIBUTES

Nominal Current	125A	RCD	30mA, 300mA
Nominal voltage	400A	Short-circuit resistance	I _{cf} =17kA
Socket outlets	2x63A, 2x32A, 1x16A, 3x230V/16A	Enclosure class	IP44

DIAGRAM IMAGES



OTHER PRODUCT IMAGES

