

TEMPORARY POWER SUPPLY CABINET WITH METER 250 A

Modular temporary power supply cabinet with meter for heavy site use. Robust and compact marine aluminum frame, lifting eyes, forklift pockets and lockable doors. Space reserve for kWh meter. 400A rail. Weight 180 kg.

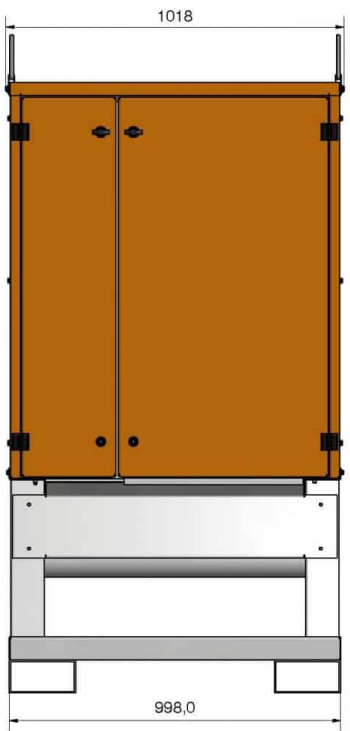
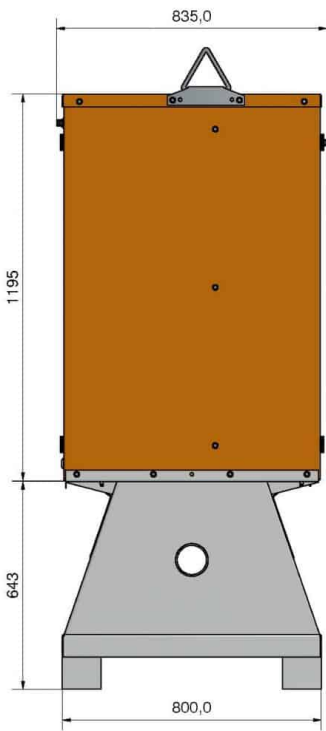
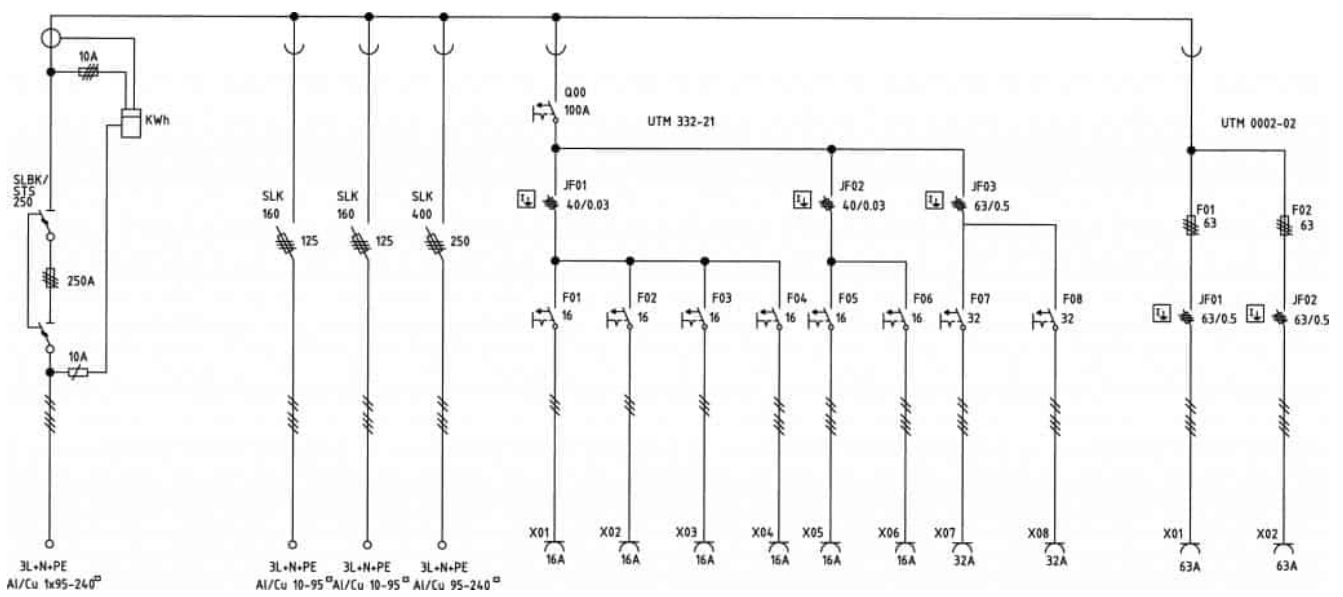
SKU: S19319



TECHNICAL ATTRIBUTES

| | | | |
|--------------------------------|---|----------------------------|-------------------------|
| Nominal Current | 250A | Oikosulkukestavyys | I _{cf} = 25 kA |
| Nominal voltage | 400 V 50 Hz | Current transformer | 300/5 0,2S |
| Input fuses | NH1 250 A | Weight | 180 kg |
| Size of the input cable | 1 x 95-240 | Measurements | 1838 x 1018 x 835 mm |
| Kiinteät lähdöt | NH00 125A ja NH1-2 250A | Enclosure class | IP44 |
| Fuse output | 2 x SLK 160 ja 1 x SLK 400 | Model | ZFSF250/21/3322-23 FI |
| Socket outlets | 3 x 16A (230V), 3 x 16A, 2 x 32A, 2 x 63A | Ordering number | S19319 |
| RCD | 30 mA ja 300 mA | Approvals | CE |

DIAGRAM IMAGES



OTHER PRODUCT IMAGES

